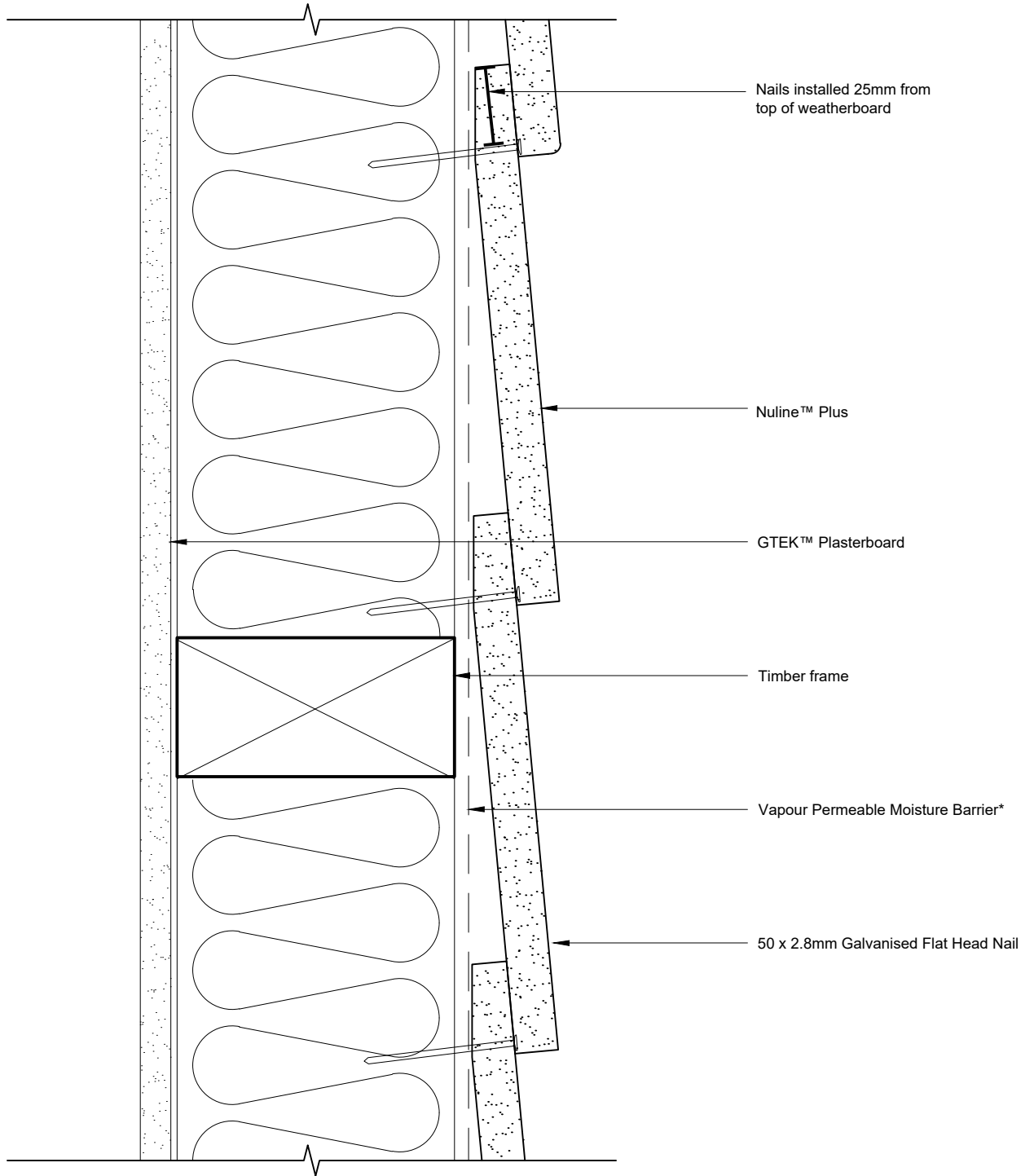


Suitable for N1-N3 Wind Zones only



\*Components not supplied by BGC

For concealed fixing in bushfire zones or coastal areas face fix min. class 3 bullet head nail at every 3rd or 4th stud



Fibre Cement Profile Nuline™ Plus  
 Detail Concealed Fixing System Timber

Date Dec 2020  
 Scale NOT TO SCALE  
 Detail No. ANUL\_010