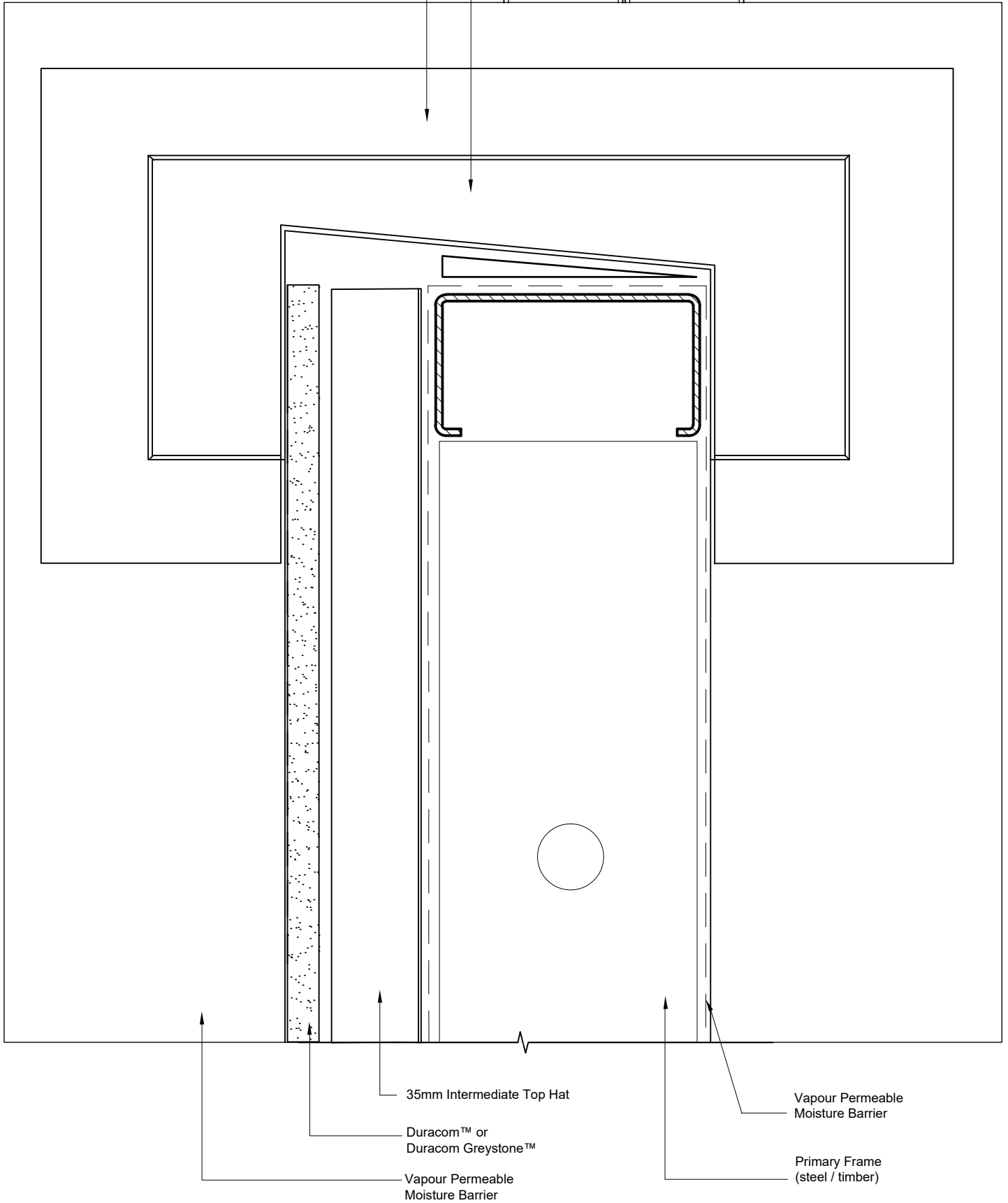


Primary Frame
(steel / timber)

Saddle Flashing

Flashing Tape adhered
to Vapour Permeable
Moisture Barrier



35mm Intermediate Top Hat

DuracomTM or
Duracom GreystoneTM

Vapour Permeable
Moisture Barrier

Vapour Permeable
Moisture Barrier

Primary Frame
(steel / timber)