

Fibre Cement

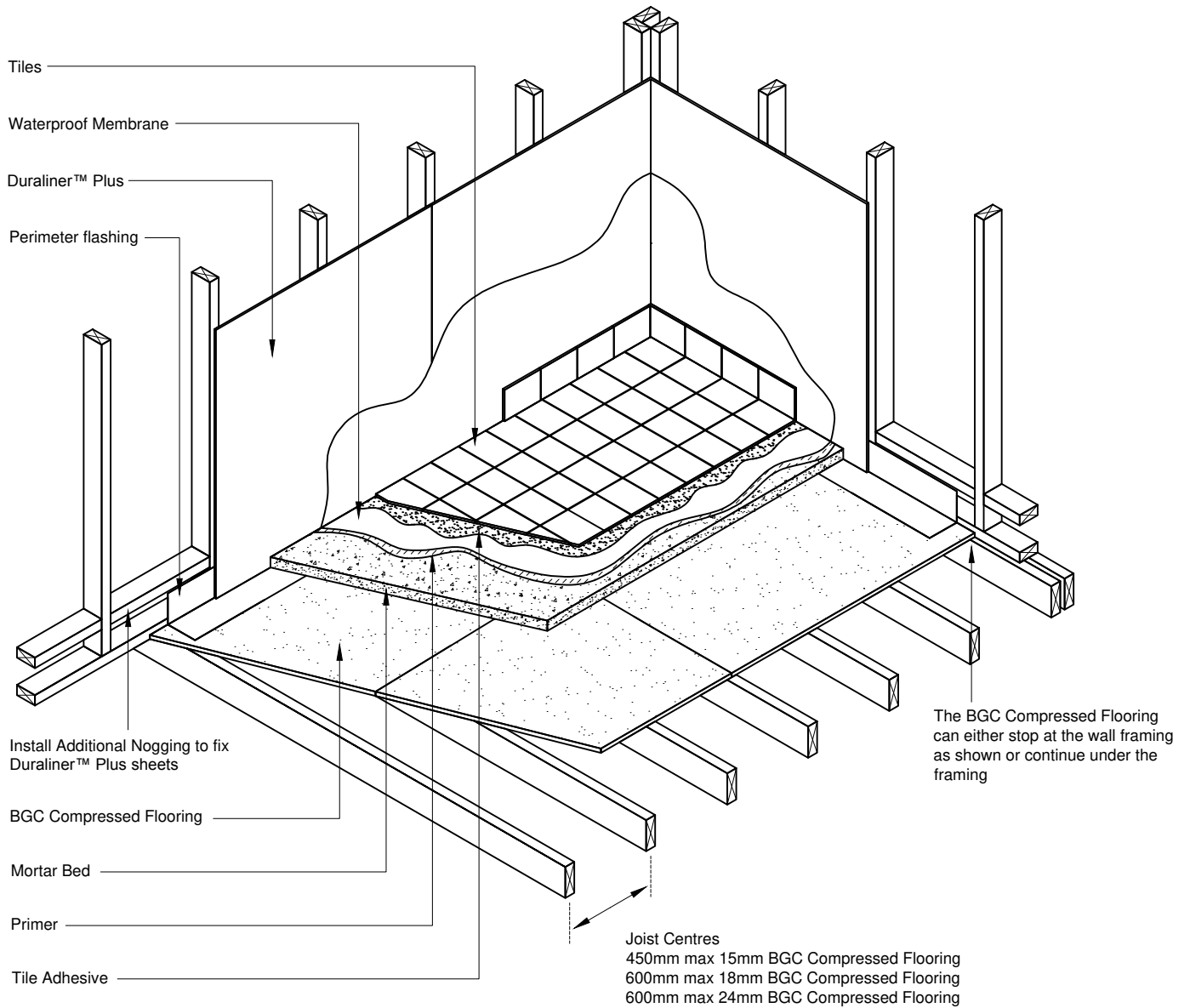
Profile
Detail

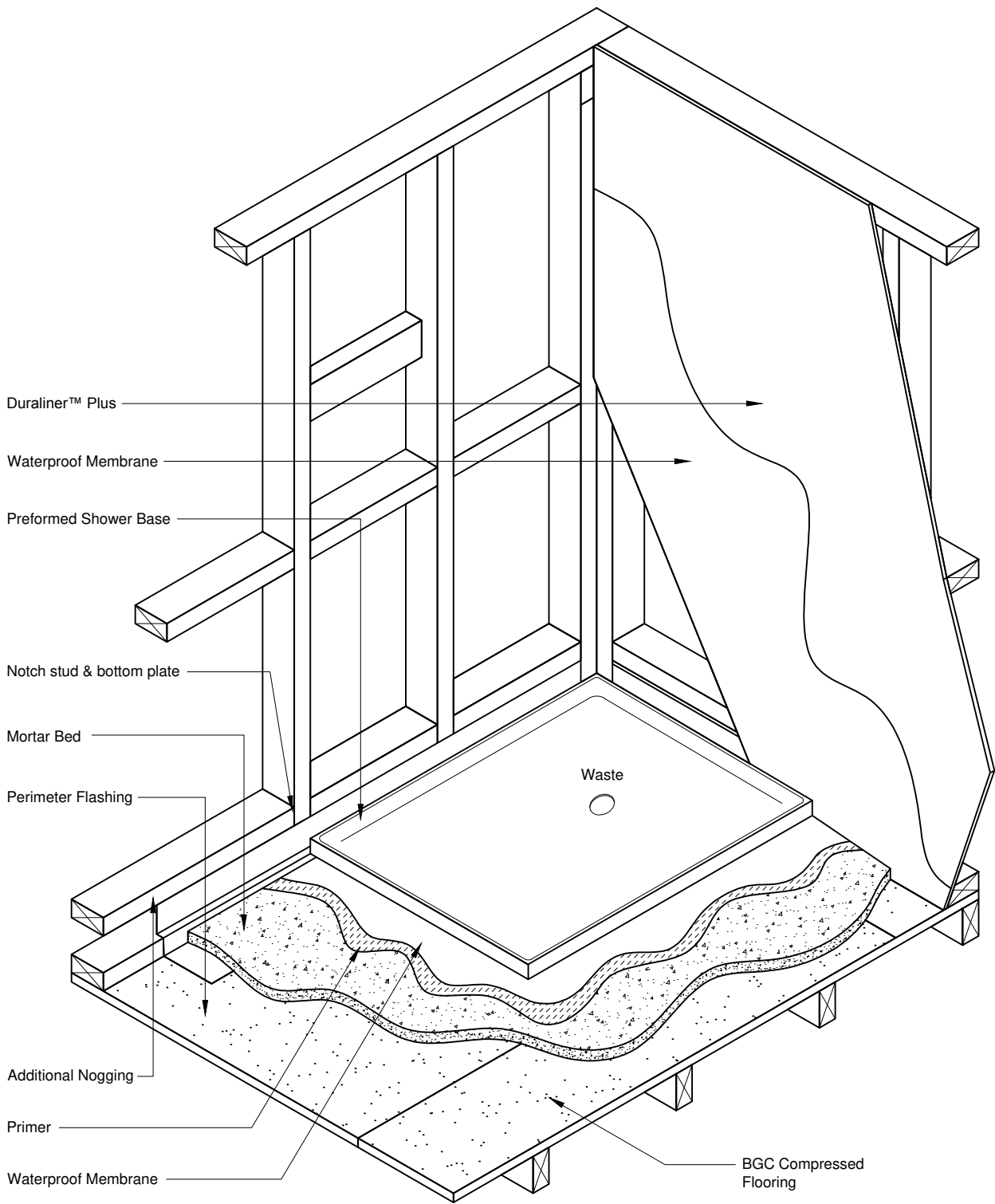
Compressed Fibre Cement
Floor Waste

Date Mar 2015

Scale 1:2

Detail No. ACOM_001





Fibre Cement

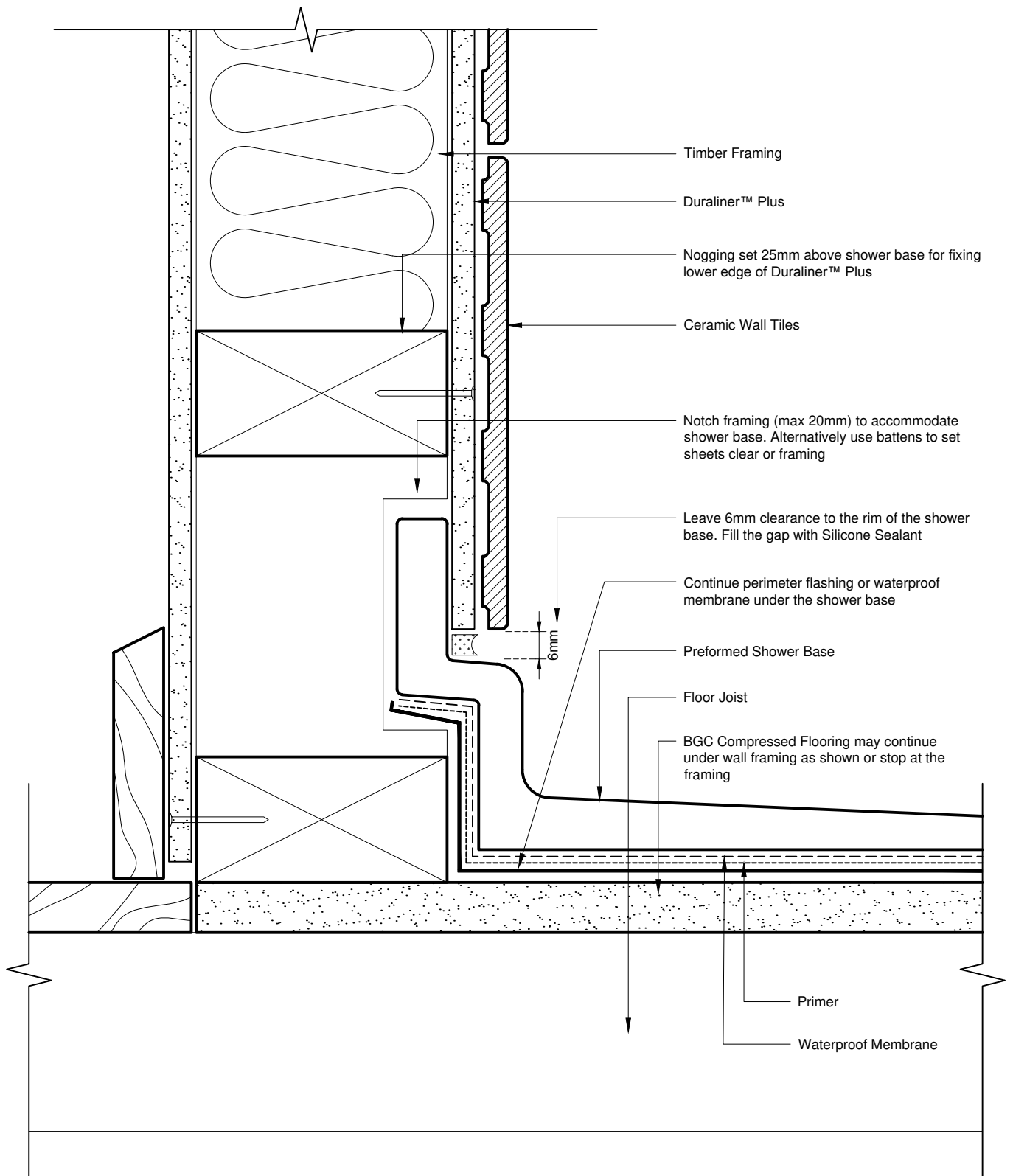
Profile
Detail

Compressed Fibre Cement
Shower Recess

Date Mar 2015

Scale 1:2

Detail No. ACOM_003



Fibre Cement

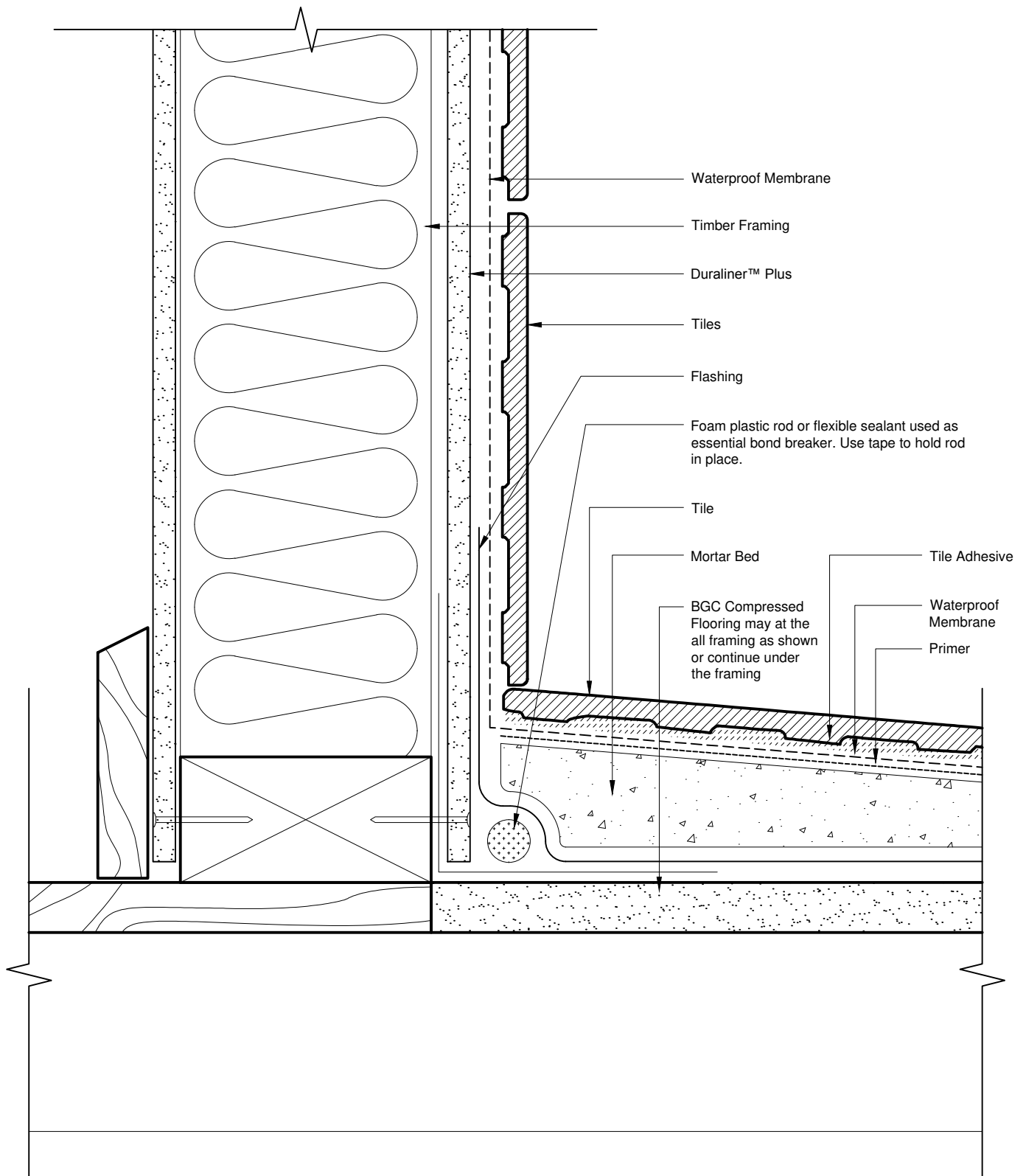
Profile
Detail

Compressed Fibre Cement
Preformed Shower Base

Date Mar 2015

Scale 1:2

Detail No. ACOM_004



Fibre Cement

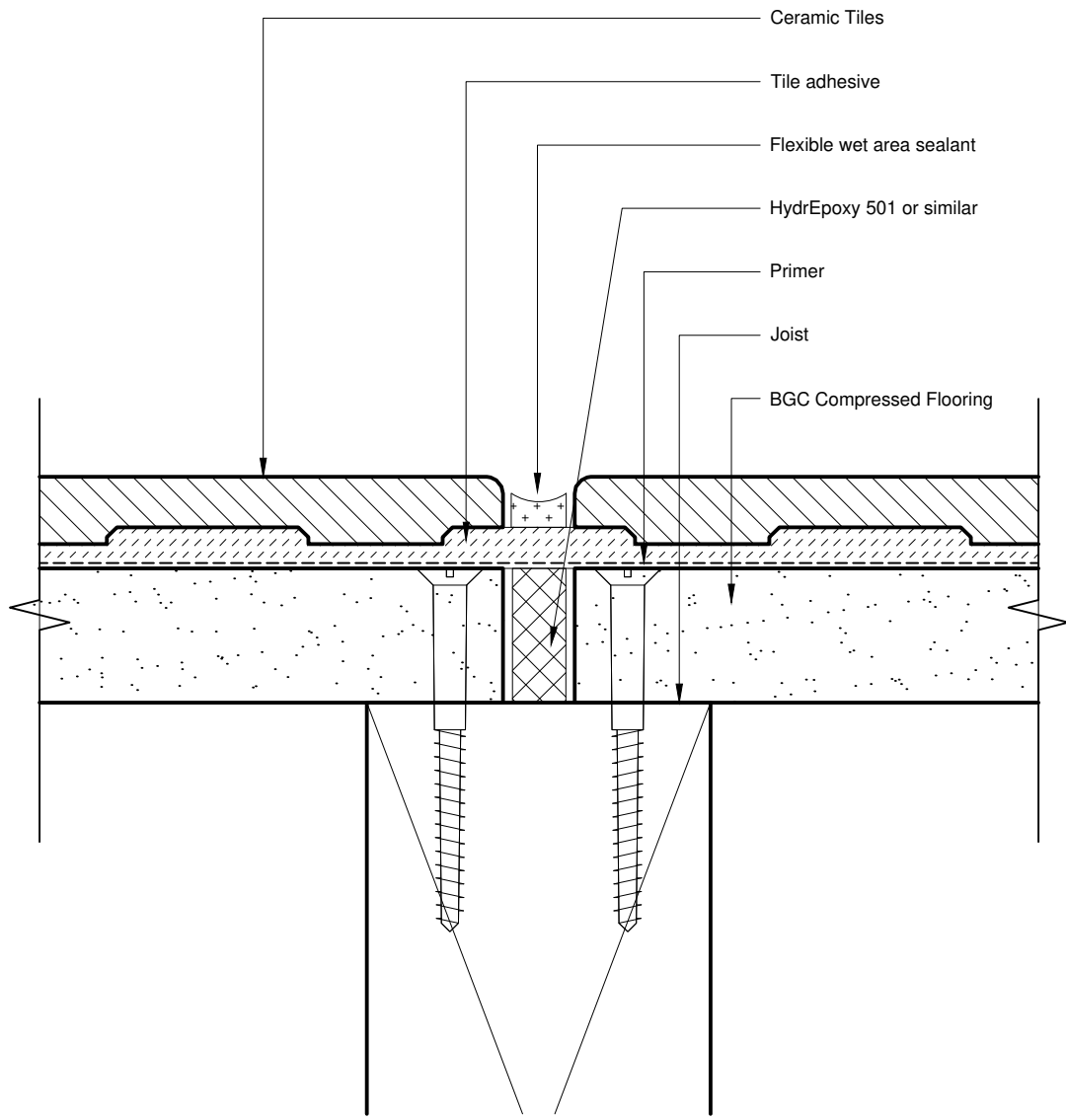
Profile
Detail

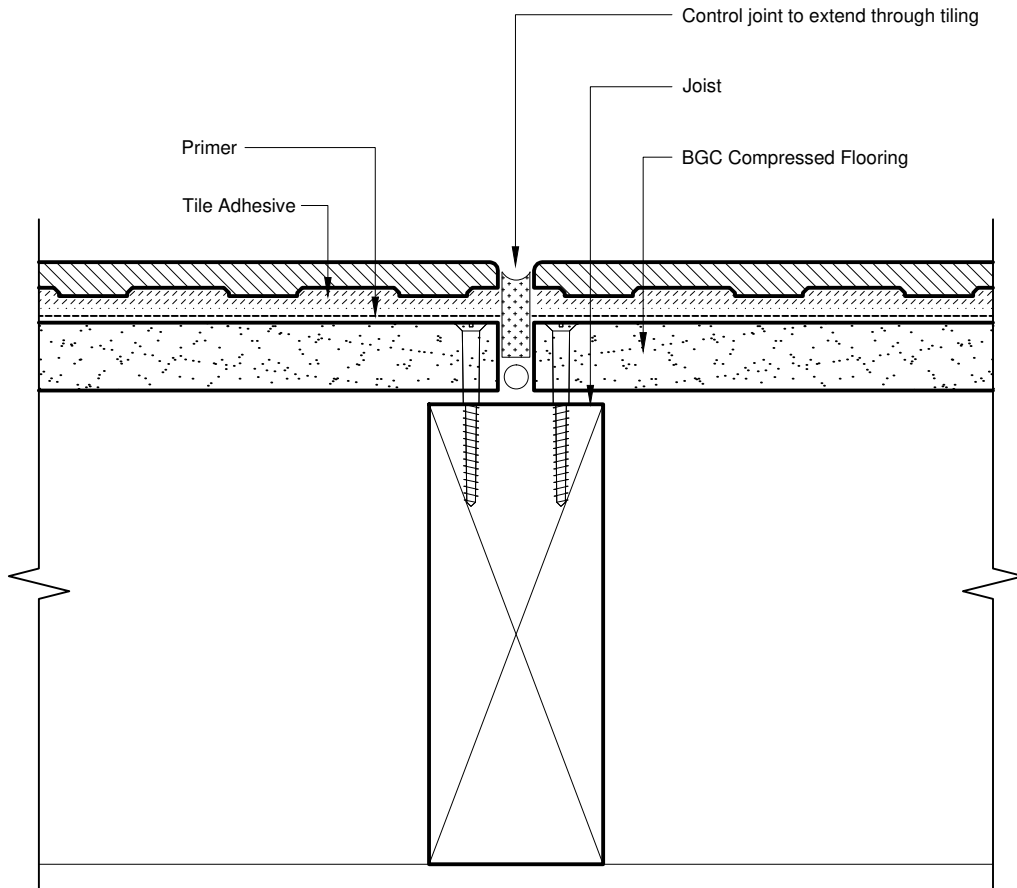
Compressed Fibre Cement
Using Waterproof Membrane

Date Mar 2015

Scale 1:2

Detail No. ACOM_005





Fibre Cement

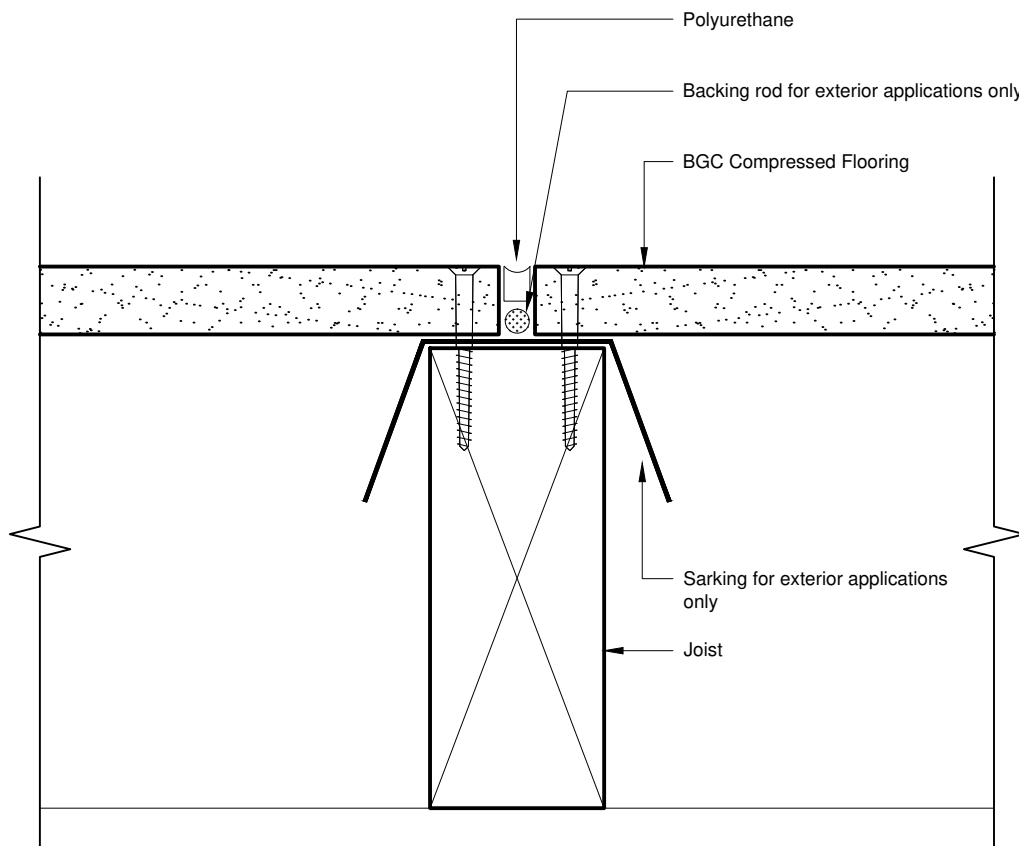
Profile
Detail

Compressed Fibre Cement
Control Joints

Date Mar 2015

Scale 1:2

Detail No. ACOM_007



Fibre Cement

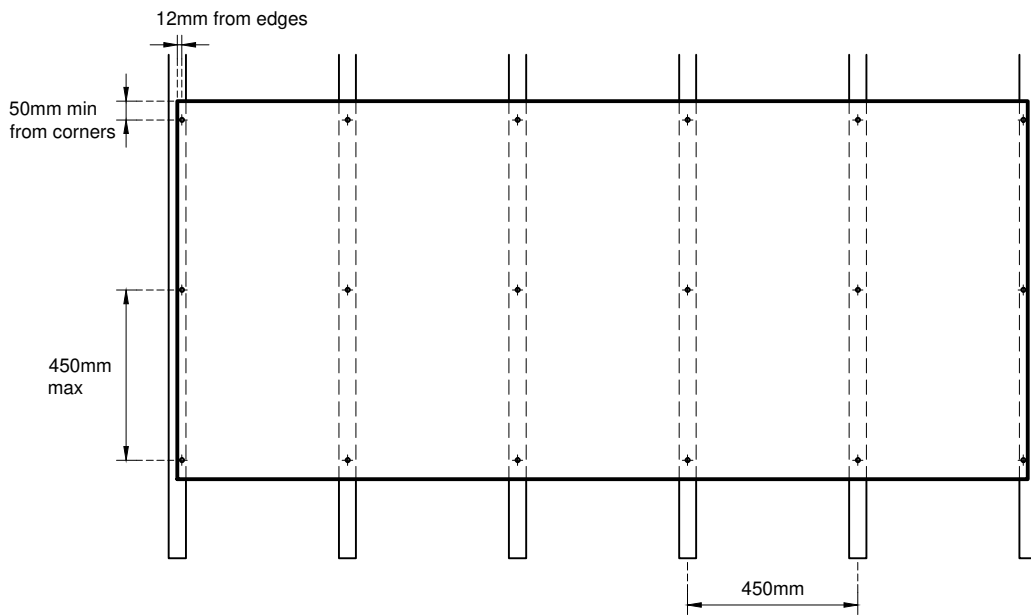
Profile
Detail

Compressed Fibre Cement
Exterior Sheet Joints

Date Mar 2015

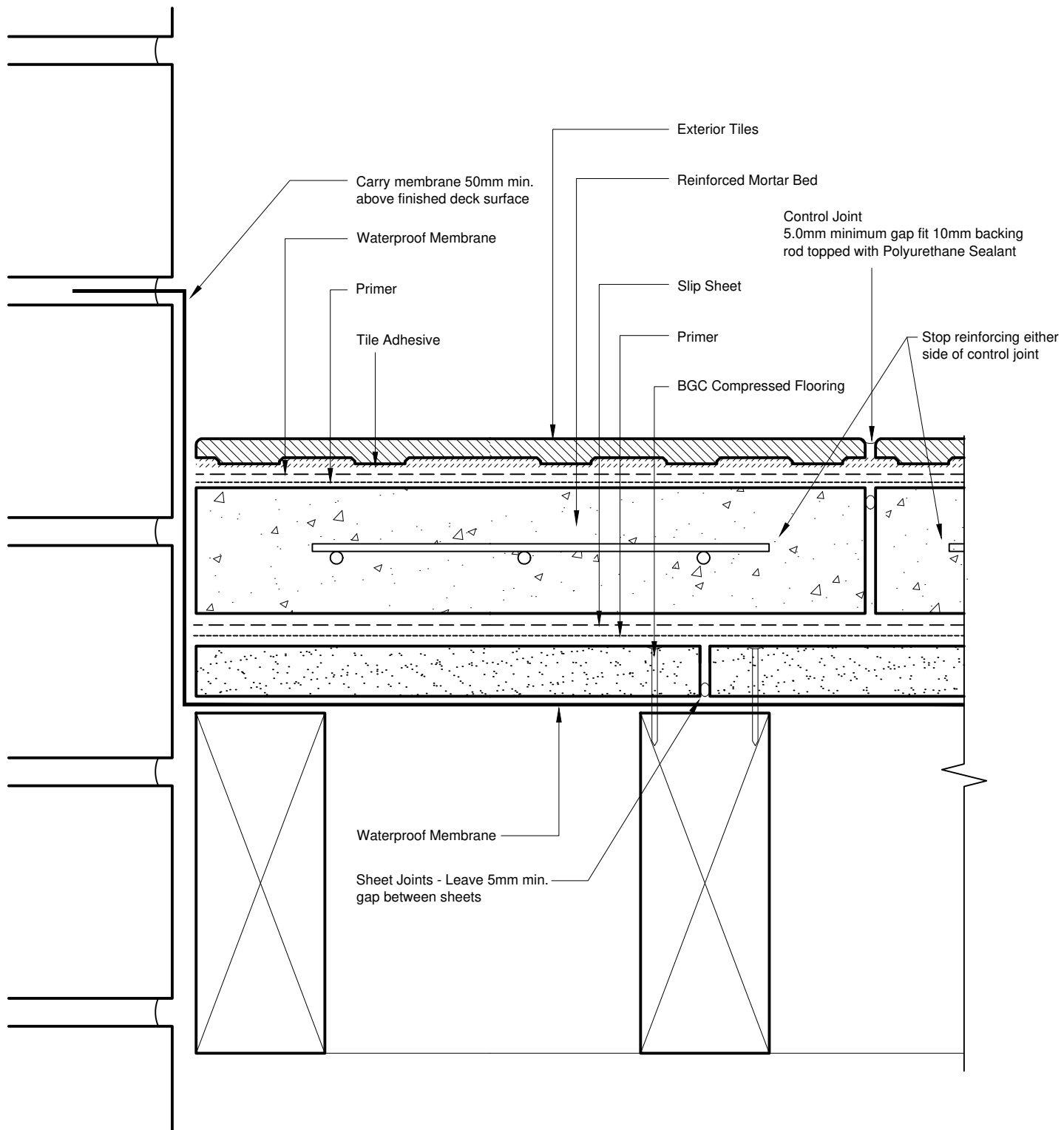
Scale 1:2

Detail No. ACOM_008



450mm centres maximum for 15mm BGC Compressed Flooring
 600mm centres maximum for 18mm and 24mm BGC Compressed Flooring

Note:
 Min. 45mm Joist face for exterior applications
 Min. 38mm Joist face for interior applications



Fibre Cement

Profile
Detail

Compressed Fibre Cement
External Deck
Waterproof with Mortar Bed

Date Mar 2015

Scale 1:2

Detail No. ACOM_010

