





“BGC PLASTERBOARD AND INNOVA™ PRODUCTS GAVE ME THE FLEXIBILITY IN DESIGN AND CONSTRUCTION FOR THIS PROJECT – I REALLY PUSHED THE BOUNDARIES AND BGC HELPED ME ACHIEVE MY VISION FOR THE PROJECT.”
SAM CHIDO. AREA DESIGN.

CHiodo HOUSE

SAM HAS COMPLETED A MAJOR RE-BUILD OF A VICTORIAN DOUBLE FRONTED HOUSE IN THE SUBURBS OF MELBOURNE, RETAINING SOME OF THE ORIGINAL ARCHITECTURAL FEATURES OF THE HOUSE AND ADDING SOME STUNNING MODERN DESIGN FEATURES USING BGC'S INNOVA™ AND PLASTERBOARD PRODUCTS.

"BGC products helped me achieve the design vision for this project in that I wanted the appearance of a concrete structure almost floating on a glass prism – I've emulated the look of concrete by using the Durascape™ system from BGC. This works really well due to its relative light weight (when compared with concrete) and the ease with which it can be installed. The use of the product in an angular dimension was a design concept that we followed and Durascape™ enabled this to be implemented successfully.

The design details on a project like this are very important to get right. It was great working with the team at BGC, they were very helpful with technical support and advice, and whenever we needed product they had delivery on site within days, which is very important when working towards a budget and tight timeline."

Sam Chiodo, Director/Architect of Area Design.

02 INTERIOR STAIRCASE



03 EXTERIOR



04 LANDING



PROJECT: CHIODO HOUSE
LOCATION: ESSENDON VICTORIA
ARCHITECT: AREA DESIGN



**BGC FIBRE CEMENT
PRODUCTS UTILIZED**
DURATEX™
DURALINER™

**BGC PLASTERBOARD
PRODUCTS UTILIZED**
CEILINGBOARD
WATER RESISTANT
PLASTERBOARD
IMPACTBOARD

**INNOVA™ PRODUCTS
UTILIZED**
DURASCAPE™

**AUSTRALIAN OWNED
& MANUFACTURED**
BGCINNOVADESIGN.COM.AU
BGC.COM.AU/PLASTERBOARD



**“EVERYONE COMMENTS ON THE CURVED
FLOATING CEILING AND WALL DISPLAYS
WE BUILT FROM BGC PLASTERBOARD.”**
CON BAHRAMIS. CBG ARCHITECTS.

HAMPTON HOUSE

A LIFE LONG DREAM OF CON'S HAS BEEN TO DESIGN AND BUILD HIS OWN HOME AND PUSH THE BOUNDARIES OF ARCHITECTURAL DESIGN. HIS 3 BEDROOM, 3 STORY HOME OVERLOOKING HAMPTON BEACH IS STUNNING AND DEMONSTRATES THE HIGHEST LEVEL OF ATTENTION TO DETAIL. BGC PLASTERBOARD IS FEATURED THROUGHOUT THE HOUSE.

"The ceiling is stunning and an unusual detail in a residential project, it is a curved profile with concealed suspension so it appears to float in space. We have installed LED lights behind the ceiling to highlight it which adds to the floating feeling of the ceiling."

"We designed and built display case type inserts in the walls for my musical instruments which are a hobby of mine, I value my instruments but don't play them very well! We wanted to display them like pieces of sculpture."

"My plasterer was like a craftsman and he recommended that we use BGC Plasterboard and Curveboard™ because he needed a high quality product to deliver against our brief – he is very passionate and proud of his work which is why he chose BGC."

Con Bahramis Owner/Architect of
CBG Architects.

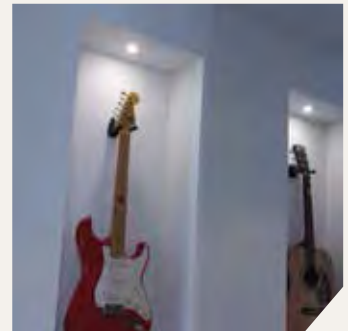
02 INTERIOR STAIRCASE



03 KITCHEN



04 GALLERY



PROJECT: HAMPTON HOUSE
LOCATION: BEACH ROAD HAMPTON
ARCHITECT: CBG ARCHITECTS



**BGC PLASTERBOARD
PRODUCTS UTILIZED
CURVEBOARD™
CEILINGBOARD
PLASTERBOARD**

**AUSTRALIAN OWNED
& MANUFACTURED**
BGCINNOVADESIGN.COM.AU
BGC.COM.AU/PLASTERBOARD



01 // 02 EXTERIOR



MOUNT GAMBIER

OUR COMPANY, EMPAC HOMES, HAS BEEN IN BUSINESS FOR 65 YEARS DEVELOPING AND BUILDING OVER 2500 HOMES THROUGHOUT THE LIMESTONE COAST AND WESTERN DISTRICT OF VICTORIA.

“Our Conroe Heights project has taken us 20 years to develop. We have sold land and house and land packages and have built over 2500 houses. For the last 15 years the only internal and external lining products we have used are BGC’s plasterboard and fibre cement products.

Products such as Duragrid and NuLine™ Plus give us the flexibility on the exterior facades and internally their full range of plasterboards and cornices is perfect for our contractors to give us the finish and quality that we require and our customers demand.”

“ WE ONLY USE BGC PRODUCTS FOR ALL OUR INTERNAL AND EXTERNAL LININGS.”

CLINT MITCHELL. 3RD GENERATION OWNER EMPAC HOMES.

PROJECT: CONROE HEIGHTS
 LOCATION: CONROE HEIGHTS, MT GAMBIER
 BUILDER: EMPAC HOMES
 CONTRACTOR: MG PLASTERERS



BGC PRODUCTS UTILIZED
 PLASTERBOARD
 CEILINGBOARD
 WATER RESISTANT PLASTERBOARD
 IMPACTBOARD
 SOUNDBOARD™
 DURATEX™
 DURALINER™

INNOVA™ PRODUCTS UTILIZED
 NULINE™ PLUS
 DURAGRID™
 STONESHEET™
 DURAGROOVE™
 DURASCAPE™

AUSTRALIAN OWNED & MANUFACTURED
 BGCINNOVADESIGN.COM.AU
 BGC.COM.AU/PLASTERBOARD

GEELONG TOWNHOUSES

BEN HAS JUST COMPLETED CONSTRUCTION OF 4 TOWNHOUSES IN GEELONG. HE USED BGC FIBRE CEMENT PRODUCTS THROUGHOUT THIS DEVELOPMENT AS IT BENEFITS THE DEVELOPER, PURCHASER AND BUILDER.

“As a builder we are always looking at the bottom line. By using the Innova™ range of products from BGC we are able to make more profit without compromising the design and the added durability and low maintenance of the products means it is a win/win.

The developer has greater marketability, the owner has less maintenance and as the builder we benefit as the product is easier to install and has a lower on-wall cost.”

02 EXTERIOR CROP



**BGC PRODUCTS
UTILIZED**
COMPRESSED
FIBRE CEMENT
DURATEX™
DURALINER™
DURALATTICE™

**INNOVA PRODUCTS
UTILIZED**
NULINE™ PLUS

**“WE USE BGC INNOVA™ FACADE SYSTEMS
TO PROTECT OUR BOTTOM LINE”**

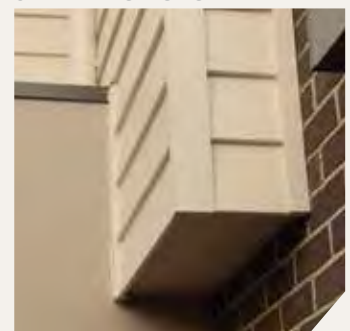
BEN SANDERSON. FIRST EARTH CONSULTING.

PROJECT: TOWN HOUSES
LOCATION: GEELONG, VICTORIA
BUILDER: NICHOLSON CONSTRUCTION

03 EXTERIOR CROP



04 EXTERIOR CROP



01 EXTERIOR VIEW





**“BGC DURACOM™ IS A GREAT PRODUCT.
THERE IS NO LIMIT IN THE USE OF DURACOM™
IF IT’S LEFT TO YOUR IMAGINATION”**
MATT PATZEL, MG PLASTERERS.

OUR BAY HOUSE

OUR BAY HOUSE IS A 6 BEDROOM HOLIDAY HOUSE BUILT FOR RENTAL PURPOSES AT PORT MACDONNELL, SOUTH AUSTRALIA. BGC PLASTERBOARD AND FIBRE CEMENT PRODUCTS WERE USED THROUGHOUT THE PROJECT.

"I started my business in 2002. We supply and install BGC Plasterboard and Fibre Cement from our base in Mt Gambier. We distribute across Western Victoria and the Limestone Coast of South Australia from Border town across to Kingston and down to Warrnambool.

I really enjoy buying from BGC, they are a one stop shop for plasterboard and fibre cement. I know I have the back up from BGC on price, quality and service, they are a pleasure to deal with. It's great to see BGC has launched the Innova™ range of facade and exterior cladding systems.

We had a bit of fun with the Duracom™ product on this project. We used 600 x 600 panels in the alfresco area and slimline planks on the exterior.

There is no limit in the use of this product if it is left up to your imagination."

02 ALFRESCO



03 EXTERIOR



04 ALFRESCO



PROJECT: OUR BAY HOUSE
LOCATION: PORT MACDONNELL, SOUTH AUSTRALIA
BUILDER: MATT PATZEL
CONTRACTOR: MG PLASTERERS



**BGC PRODUCTS
UTILIZED**
PLASTERBOARD
CEILINGBOARD
WATER RESISTANT
PLASTERBOARD
IMPACTBOARD
DURATEX™
DURALINER™

**INNOVA PRODUCTS
UTILIZED**
DURACOM™
DURASCAPE™

**AUSTRALIAN OWNED
& MANUFACTURED**
BGCINNOVADESIGN.COM.AU
BGC.COM.AU/PLASTERBOARD

BGC FIBRE CEMENT AND PLASTERBOARD RANGES ARE IDEALLY SUITED TO THE AUSTRALIAN RESIDENTIAL SECTOR. THE WIDE RANGE OF PRODUCTS OFFERS FLEXIBILITY IN DESIGN AND CONSTRUCTION FOR ALL TYPES OF RESIDENTIAL PROJECTS.

INNOVA

- // DURAGRID™ – suitable for expressed joining and available with either steel or timber battens
- // DURACOM™ – exceptionally resistant and perfect for express joining
- // DURASCAPE™ – a base sheet featuring a shiplap join that gives a subtle vertical shadowline
- // DURAGROOVE™ – a vertically grooved sheet available in 3 different profiles and spacings
- // STRATUM™ – an innovative alternative to traditional weatherboards. A trio of plank products
- // NULINE™ PLUS – a weatherboard-style cladding that echos real timber
- // STONESHEET™ – a stoneware substrate designed for true masonry on timber and steel buildings
- // DURAFLOOR™ – ultimate flooring solutions suitable for both interior and exterior applications

BGC FIBRE CEMENT

- // DURASHEET™ – a general purpose sheet for eaves, soffits, car ports and verandahs
- // DURAPLANK™ – similar to traditional weatherboards and available in smooth, woodgrain or rusticated finishes
- // DURATEX™ – a waterproof external cladding which provides a solid substrate for applied decorative finishes
- // DURALATTICE™ – marries the instant decorative appeal of traditional lattice to the practicality of fibre cement
- // DURALINER™ – a general purpose sheet, highly effective in wet areas and can be used in fire and acoustically rated interior walls
- // DURALUX™ – a general purpose sheet which can be used in many demanding applications
- // COMPRESSED FLOORING – a superlative substrate for interior floors in wet areas and equally suited as a substrate for exterior decks
- // CERAMIC TILE UNDERLAY – a specially formulated stable substrate for slate and ceramic tile floors
- // VINYL AND CORK UNDERLAY – delivers a smooth, durable surface for vinyl and cork tiles



BGC PLASTERBOARD

- // PLASTERBOARD – an interior lining board which provides a flat, blemish free monolithic surface ready for decoration
- // CEILINGBOARD – designed specifically for use on ceilings where ceiling joists are at 600mm intervals
- // WATER RESISTANT PLASTERBOARD – developed specifically for use in wet areas
- // FIREBOARD – has a higher resistance to fire than standard plasterboard and suitable for both walls and ceilings
- // WET AREA FIREBOARD – designed to be used in areas where FRL's are required
- // SOUNDBOARD™ – a high density plasterboard designed to reduce unwanted noise
- // CURVEBOARD™ – a flexible plasterboard that enables the creation of curves on interior walls and ceilings
- // IMPACTBOARD – a high density plasterboard designed for use in very high traffic areas
- // BGC ENVIROBOARD + 5 – manufactured using more recycled content than standard plasterboard

// BGCINNOVADESIGN.COM.AU
// BGC.COM.AU/PLASTERBOARD

ADELAIDE
TELEPHONE
08 8250 4962

BRISBANE
TELEPHONE
07 3271 1711

MELBOURNE
TELEPHONE
03 9392 9444

PERTH
TELEPHONE
08 9334 4900

SYDNEY
TELEPHONE
02 9771 9660

NEW ZEALAND
TELEPHONE
0011 64 9264 1457

TECHNICAL HELP LINE
1300 652 242

Design by **The SHAPE Group**
theshapegroup.com.au



Quality
ISO 9001

SAI GLOBAL



BGC 2011
GECA 04-2011/C
PANEL BOARDS

Build it better with **BGC**



Plasterboard
Fibre Cement

BGC.COM.AU/PLASTERBOARD
BGCINNOVADESIGN.COM.AU